

THE TORCH



BIG DREAMS

SPRING 2024 - ISSUE 16

Presidential Perspective

Since becoming President of Central Christian College of the Bible in 2014, I have learned that God’s work can be seen. As Moses said to the Israelites in Deuteronomy 10:21, “*He is your praise and he is your God, who has done for you these great and awe-inspiring works your eyes have seen.*” I’m blessed to see many of the ways God works through ministry education in Moberly, St. Louis, Cincinnati, and beyond.



Dr. David Fincher ('93)

President@cccb.edu

660.833.4260

(call/text)

- Of course, the primary work is the **development of undergraduate and graduate students**, whether in person or online. They learn in community to be biblical servants in kingdom ministry.
- I’m also inspired by the ongoing work of **faithful alumni**, whether they graduated from CCCB, CCU, or SLCC. Their ongoing ministry represents the visible results of the past investments in Biblical higher education.
- In addition, **supporters of ministry education** work together to power this institution through gifts and prayers. In 2023, more than \$5 million was donated for these efforts by individuals, churches, and foundations.

The following pages describe big dreams the College has for students, alumni, and supporters. As you read about Central’s work, join with me in offering praise to the One whose “works your eyes have seen.”

IN THIS ISSUE:

- 3 Apartments Coming to Campus!
- 4 Extension & Graduate Education
- 5 Key Academic Leaders
- 6 Find Your Authentic Purpose
- 8 LiTE [Leaders in Training Event]
- 9 Meet the Admissions Team
- 10 New Volleyball & Soccer Coaches
- 12 Church Services Help Preachers and Congregations Thrive
- 14 Your Estate Plan, Your Legacy
- 15 A Shared Vision for Ministry Education
- 19 Honorary Gifts from 2023

ON THE COVER:

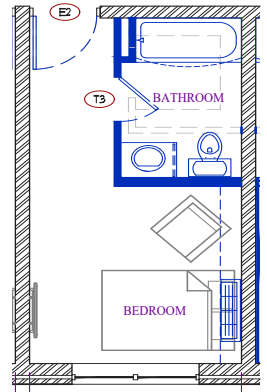
*First-year student **Harmoni Tart** hails from O’Fallon, Illinois (a suburb of St. Louis). She enrolled at CCCB to grow spiritually, experience Christian community, and play basketball for the Lady Saints. Harmoni is in the dual degree program with Indiana Wesleyan University. Her dream is to become an attorney.*

Apartments Coming to Campus!

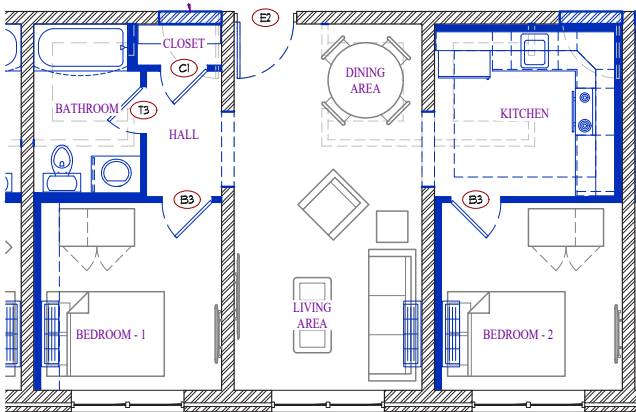


In 2004, Mabee Foundation Hall was built debt-free thanks to generous donors and The Mabee Foundation (Mabee). It contained 54 dormitory rooms on three floors. Since 2020, Lang Hall and Spurling Hall were improved with over \$2 million of investment from gifts through **LIFT the Torch** campaign, Mabee, and The Solomon Foundation (TSF). In April 2023, Central's Trustees approved pursuing funds to renovate Mabee Foundation Hall for its 20th year of service. To pay for the \$1.6 million project, Central's donors gave over \$600,000, with TSF providing an additional \$575,000 and Mabee awarding a \$450,000 challenge grant.

Hotel Room Layout



Two-Bedroom Apartment Layout



When completed in August 2024, 3rd floor will have **18 dormitory rooms** with new energy-efficient HVAC. 1st and 2nd floors will contain **4 hotel-style rooms, 9 one-bedroom apartments, and 6 two-bedroom apartments**. These will be utilized by non-traditional students, staff, and campus guests.

Online Education in a Local Congregation

Online education is a big part of 21st Century higher education. For many years, Central has made online courses and degrees available for students on campus and from around the world. However, a lot has changed in the past decade in regard to digital teaching and learning. In addition, supporting extension sites requires a more robust online program. To improve Central's online education for the needs of local churches, Central established an academic partnership with **New Day Christian Church** (Port Charlotte, Florida). The college provides students with accredited online education as part of their residency program. Currently, 24 students are enrolled from New Day.

We anticipate this partnership will lead to in-person classes in Florida by Fall 2025. Educational partnerships such as these help students receive a quality biblical education from the college while learning relevant ministry skills from the church. This will benefit students, the College, and future church partners.



Graduate Program Modifications

The **Russell School of Ministry (RSM)** graduate degree is designed to help ministry leaders develop personal leadership skills, lead an organization or church, and learn with other successful leaders. The program applies practically to their leadership role. Two modifications have been made to help students.

The MA in Ministry Leadership is now structured so students can take multiple electives or pursue a ministry concentration. The first concentration is **Preaching**, offered with Dr. Billy Strother. Future concentrations will be developed starting in Fall 2024.

The other change make the degree accessible to more students. It will now **primarily utilize distance education**, while providing in-person instructional elements in Cincinnati, St. Louis, Moberly, or elsewhere. Online courses will be offered in 8-week format so students can complete a degree in two years with continuous enrollment, whether in person or remote.

Key Academic Leaders

Shawn Lindsay has served colleges in a variety of academic leadership roles for over 20 years. He served in the Adult Degree Completion program and the Registrar's Office at Lincoln Christian University. He was on the faculty at Ozark Christian College, overseeing their Learning Center, and became Associate Dean of Digital Learning & Innovation. At CCCB since May 2022, as **VP of Academics**, Shawn now oversees all aspects of academic operations, faculty, curriculum, accreditation, campus assessment, and the IT department.



Doug Spears' rich history of service includes Counseling Pastor at Compassion Christian Church, Director of LifeCHANGE Counseling Ministry (Savannah, Georgia) and Professor and Chair in the Counseling & Family Studies Department at Cincinnati Christian University. His responsibilities as **Graduate Dean** include overseeing academic programs, faculty, student affairs, accreditation compliance, strategic planning, collaboration, and advocacy to ensure the smooth functioning of Russell School of Ministry's programming.

A native of Mexico, Missouri, **Chris White** supports teachers and students with quality tools, so technology fades into the background and quality ministry training takes the stage. He has implemented new quality standards in online courses to simplify policies, train faculty on software tools, and identify students who need help. As the **Associate Dean of Digital Learning**, his work improves partnerships with churches, organizations, and locations using Central's online education. He says, "The tools we use aren't nearly as important as the people using them or the truth that is shared, but the tools do help make a connection when distance is an obstacle."



Find Your Authent

God has a purpose for everyone.

When you sense His call to Kingdom work, the process is much closer to the beginning than the end. Being formed towards an authentic purpose requires time and discipline. One of the best ways that can happen is in a community devoted to God's word, where you can be formed through **Service, Experiences, Academics, and Leadership**. The resulting **SEAL** ultimately reveals Christ's purpose for your life. However, you cannot fully know your authentic purpose without understanding the Bible.

Purpose is revealed in biblical truth.

Since being created in 1957, Central Christian College of the Bible has been helping students discover the unique seal of their authentic purpose. The heart of the CCCB curriculum and culture is that God's word is true for all time, trustworthy for your life, and teachable to others. Central instills a traditional Restoration Movement understanding of Scripture, truth, and the church to shape an informed Christian worldview. Authentic purpose flows from studying Scripture to learn God's values, principles, and priorities as He personally shapes the seal of your life. Everyone is called to live a life worthy of Christ. Some will serve in a vocational ministry career or as a missionary. Others will pursue a marketplace career where a faithful life leads to personal evangelism and ministry. Biblical truth is still relevant, regardless of your occupation.

Through Central's academic partnership I'm working towards a double bachelor's degree in criminal justice and Bible.

Harmoni Tart (Class of '27)

SERVICE builds Christ-likeness.

Central students actively serve in campus opportunities, community ministries, and congregational activities. Helping other servants meet the needs of God's people reveals how He can work through you. Service learning opportunities, both short-term and extended, develop each student's spiritual gifts. Successful service requires disciplined preparation, group involvement, and healthy attitudes. These practices clarify your authentic purpose in your own mind and heart.

Every class is taught by a professor committed to helping students discover not only what God is calling them to be but to paint a picture of all that God has in store for them in the Kingdom.

Darryl Ammon (Class of '06)

Authentic Purpose



EXPERIENCES build community.

Campus activities, worship services, sports teams, and other groups develop a student's capacity to support a personal community. Existing student ministries expose students to new ideas and opportunities that help them stretch and grow. They manage ministry details while working with a mentoring sponsor from the faculty and staff. These intentional and diverse experiences help students "taste and see that the Lord is good" through life-giving and values-driven activities. Learning in a spiritual

Throughout my years at Central, one of the things I keep learning and relearning is that sometimes God's plan for your life and His will for you looks a lot different than what you thought it might look like in the beginning.

Tina Defreitas (Class of '08)

community allows students to exercise faith in action, demonstrate love for others, and apply the lessons learned.

ACADEMICS build commitment.

Although the Bible can be learned personally and in the church without college study, more can be gained in classes that teach them to love the Lord with their minds and take every thought captive in obedience to Christ. Deep study of the Bible's history, language and culture informs faithful interpretation and

Central gave me the opportunity to grow in my gifts and abilities through different leadership positions. I served as an RA... I served in supply preaching... and by experiencing many different ways of serving God's Kingdom.

Lucas Reynolds (Class of '19)

application. Studying at Central allows a student to create lifetime commitment to study God's word.

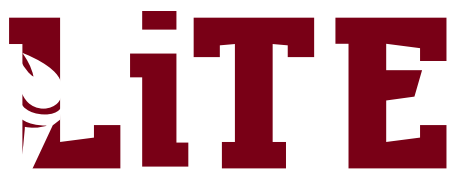
LEADERSHIP builds confidence.

Students at Central learn the ropes of leadership with a supportive safety net. These roles reveal, test, and develop spiritual gifts. Many students become volunteer or paid leaders even while still enrolled. Those who want to start a new ministry receive direction, oversight, and resources to make their vision reality.

Discovering your authentic purpose is an important step to embrace what God has in store for your life. **May His authentic purpose be sealed in you.**

Scan to watch a video about finding your authentic purpose at Central.





[Leaders in Training Event]

Fuel Your Summer at a Christian College

July 15-18, 2024

Learn from College Professors
Enjoy a Campus Experience
Spend Time, Worship with Students
Try Astronomy, Archaeology, and More
Network with Youth Leaders
Open to Ages 14-18
and Sponsors



When it comes to managing student, youth group, and church relationships for the admissions team, **Jess Poettker** is front and center. As **Youth & Church Outreach Specialist**, she orchestrates church events, builds relationships with students across the Midwest and plans events like LiTE (described above).

JessPoettker@cccb.edu | 660.414.5657 (call/text)



With a passion for transformative impact and a wealth of experience in fostering positive change, **Janeil Owen** serves as **Vice President of Advancement**. His “Triple A” responsibilities now include overseeing Admissions, Athletics, and Advancement.
JaneilOwen@cccb.edu | 859.684.7510 (call/text)

Brian Barber started working at CCCB in April 2023. The father of seven children aged 11-25, he enjoys his church, music, sports, & the art of friendship. As **Executive Director of Enrollment**, Brian strives to encourage and equip others in their faith while leading a team of passionate kingdom workers.

BrianBarber@cccb.edu | 660.672.9327 (call/text)



As **Assistant Director of Admissions**, **Roger Marquez** is the team expert in everything digital. He started in 2021 and is also the Head Coach for shotgun sports. He and his wife Daisy are dedicated full-time foster parents. Roger’s contributions reflect his passion for education, sports, and making a positive impact on the community.

RogerMarquez@cccb.edu | 660.141.6364 (call/text)

A 2013 CCCB graduate, **Emilee Burian** eases the transition for adult learners as **Assistant Director of Online & Graduate Admissions**. She served with her husband Jonathan in ministry for over a decade and is passionate about equipping others to do the same. She introduces Central’s online and graduate degree options to students of all ages.

EmileeBurian@cccb.edu | 660.277.6485 (call/text)



Dave Frees started working at CCCB in 2023 as an **Admissions Counselor**. With over 20 years of missions experience, he was an urban missionary for seven years in Kansas City. Dave is driven by a heart to see young people walk in God’s calling on their life and respond to that call through education.

DaveFrees@cccb.edu | 816.565.0502 (call/text)

Meet the **ADMISSIONS** Team

Tina Defreitas is a CCCB graduate, wife of Men’s Basketball Coach Jack Defreitas, and mom to four amazing kids! Tina loves the Central community and introducing others to it through her role in admissions. As the **Campus Visit Coordinator**, she can often be seen taking students on campus tours.

TinaDefreitas@cccb.edu | 660.353.7005 (call/text)



Volleyball is coming back to the Ferneau Center's hardwood court in Fall 2024. At the helm will be **Kelly Cobb**. Kelly has had a long relationship with CCCB, where her parents Russ and Betty Cobb met as students and her dad worked in admissions, financial aid, and as men's basketball coach. Kelly is excited to follow his coaching footsteps and lead Central's volleyball team.

She comes to CCCB after two seasons as an assistant coach for Hallsville (MO) High School, where the volleyball team won a district title in 2022. She is a Hallsville native and started her volleyball career as the Indians' setter. She currently ranks fourth in career assists for the program.

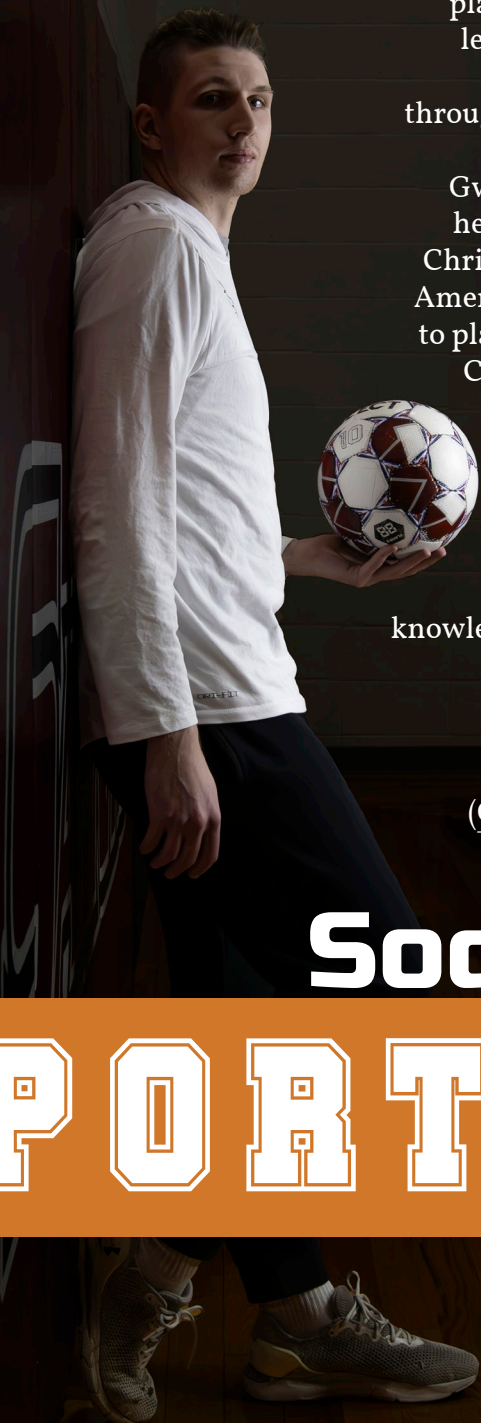
Kelly attended Drury University in Springfield, where she was an undergraduate assistant for the volleyball program under Coach Jenifer Bahner-Hill from 2014-16. She is actively recruiting ladies who are passionate about Christ and volleyball.

Learn about Coach Kelly Cobb and Central's volleyball program by emailing her (KellyCobb@cccb.edu) for more information.



CCCB S

Volleyball



The joys of soccer will return to the Moberly campus field under the leadership of **Chase Gwynn**, a former semi-professional soccer player. He is eager to build upon Central's legacy as a place for young men who love Christ and the game of soccer to be led through the hard work necessary for success.

Gwynn hails from Apopka, Florida where he was born and raised as part of Journey Christian Church. An NCAA D3 college All-American, he attended Wheaton College (IL) to play soccer before transferring to Gordon College (MA), where he graduated with a degree in applied physics.

Chase wants the discipline, teamwork, and relationships of soccer to be part of Central's culture. He says, "My mission overall is to use the gifts, knowledge, and platform God has given me in order to sow seeds into His kingdom."

Learn about Coach Chase Gwynn and Central's soccer program by emailing (ChaseGwynn@ccb.edu) or calling him (407.454.2270) for more information.

Soccer

SPORTS

Church Services Help Preach

In Fall 2023, CCCB received two grants from the Lilly Endowment, empowering and other church leaders. Totaling over \$2.4 million, the grants will significantly delivered through the CCL Network, which equips leaders and churches with re

“Level Up” is the name of Central’s **Compelling Preaching Initiative**. Using the acronym BAIT, it describes preaching as Biblical, Accessible, Incarnational, and Transformational. Participants meet monthly with 6-8 member cohorts and individually for ten months with a seasoned preacher to attain their next “Level Up” as preachers and followers of Jesus who are responsible to communicate the Word of God in a compelling way. Each year, “Level Up” will serve 60-80 preachers, for a total of 300 over the four year grant period.



Micah Odor serves as **VP of Church Services** and **Executive Director** of the CCL Network. Micah’s family heritage has been focused on ministry. In his pursuit of “discipler-making,” he has developed numerous resources empowering believers to follow the Great Commission. A fourth-generation graduate of Cincinnati Christian University, he is proud to help continue the legacy of ministry education in Cincinnati.

[Micah@CCLeadership.org](mailto:micah@ccleadership.org)



Dr. Billy Strother serves as **Professor of Preaching, New Testament, and Leadership** for CCCB. He also serves as the Program Director of the Compelling Preaching Initiative. He also teaches in the Russell School of Ministry graduate program in Cincinnati, St. Louis, and Moberly. A former professor at Cincinnati Christian University and Point University, he brings years of experience helping preachers improve their craft, no matter their age or experience.

[BillyStrother@cccb.edu](mailto:billystrother@cccb.edu)



“Through the **Compelling Preaching Initiative**, Lilly Endowment seeks to cultivate practices among aspiring and active preachers that can help them to proclaim the gospel to a variety of audiences in more engaging and effective ways. Eligible charitable organizations in the United States were able to submit proposals to develop new and/or enhance existing programs that present promising strategies to further the aim of the initiative.”

Leaders & Congregations Thrive

By providing the church services team to provide continuing education for preachers, Lilly Endowment recently fund the two initiatives described below from 2024-2027. They will be able to access a variety of resources, events, cohorts, and coaching.

“The Church Working Right” is the name of Central’s **Thriving Congregations Initiative**. It uses multiple forms of instruction, such as webinars, in-person seminars, church micro-networks, and retreats to help provide congregational renewal. Participating churches will focus on three areas that lead to success: understanding mission & vision, reaching the community through evangelism, and developing members as disciples and leaders. Over four years, “The Church Working Right” will serve approximately 240 churches.



David@CCLeadership.org

David Vaughan serves as the CCL Network’s **Director of Coaching**. His calling as a coach emerged gradually as the leaders of other churches began to inquire about the secrets to Whitewater Crossing Christian Church’s success. After ten years of informal coaching he joined the CCL Network to design and lead regional seminars on congregational leadership and renewal called “The Church Working Right”. After retiring from Whitewater, he now lives in South Carolina.



John@CCLeadership.org

John Hampton is a native of Germantown, a small town in Northern Kentucky (population 300). He is a 1980 graduate of Bracken County High School; a 1984 graduate of Cincinnati Christian University and a 1987 recipient of Kentucky Christian University’s Master of Ministry degree. He recently retired as senior minister of Journey Christian Church in Apopka, Florida, in order to help congregations and ministers thrive in their own ministries.

“Through the **Thriving Congregations Initiative**, Lilly Endowment supports charitable organizations in the United States in developing new or strengthening existing programs that will work directly with congregations to help them assess and adapt their ministries to their changing contexts as they move toward a post-COVID-19 pandemic future.”





Whatever your life situation may be, you need an estate plan.

Your family, church, and favorite ministries are influenced by the stewardship legacy you design during your life. Preparing for the day when you are no longer on this earth requires careful thought and planning. Learn practical guidance to avoid costly probate, prepare necessary documents, and gain peace of mind. Central's partnership with FPM can provide this at no cost to you.

Financial Planning Ministry

Register to attend a free one-hour webinar April 18, 2024 by scanning below or visiting www.cccb.edu/give/estate-planning-webinars.




Phil Marley
 PhilMarley@ccb.edu
 660.833.5911
 (call/text)

A Shared Vision for Ministry Education

Since 1957, CCCB has offered a meaningful Christian college education at an affordable cost on its campus in **Moberly, Missouri**. God has used many families, churches, and foundations to provide the cost of ministry education at Central. The traditional **residential** experience gives men and women a valuable coming-of-age experience in a relational Christian community.

A decade ago, the educational program expanded to include **extension** students through distance education. That allowed people to earn a degree from Central without relocating to Moberly. Other extension options include **Cincinnati** and **St. Louis** students after the closure of ministry education campuses located there.

In 2020, Central enrolled its first **graduate** students into a Master of Arts degree. This provided a new way to start or grow a ministry career in a practical, flexible program with classes hosted online, in Moberly, Cincinnati, and St. Louis.

Continuing education equips church leaders to understand biblical truths and ministry principles through seminars, workshops, and resources of the **CCL Network** and **Elliott Library & Museum**.

This shared vision for ministry education utilizes four ways to train biblical servants for a faithful life of kingdom ministry. The cost of providing this is underwritten by **THE CCCB ANNUAL FUND FOR MINISTRY EDUCATION**. It includes generous support from families, churches, and foundations.



THE TORCH

Innovative Ministry Education in Multiple Locations for the Christian Church

Innovative ministry education is flexible in delivery, responsive to the student, and focused on the future.

Multiple locations include Moberly, St. Louis, Cincinnati, online, and other places that need more trained workers.

The **Christian church** fellowship of congregations is Central's primary audience for ministry training, while also serving the church at large.

imagine 
TOGETHER

Ministry education at CCCB is produced by multiple methods of training that combine to deliver a shared vision. It also requires bringing together many supporters. About 300 churches and over 900 individuals supported **THE CCCB ANNUAL FUND FOR MINISTRY EDUCATION** with their stewardship in 2023. This included past supporters of ministry education in St. Louis and Cincinnati, many of whom now support Central Christian College of the Bible.

When God's people share a vision, great things can happen. In the inaugural year, over \$3 million in gifts were received for **THE CCCB ANNUAL FUND FOR MINISTRY EDUCATION**, surpassing the 2023 goal of \$2.8 million.

Those results are a testimony to the name **"imagineTOGETHER."** It is inspired by Ephesians 3:20, which praises God for His power to do *"immeasurably more than all we ask or imagine."* The ultimate shared vision is seen when the Lord empowers His people. As they come together to ask and imagine, He responds with even more blessings.

This year, committed churches and individuals will **"imagine TOGETHER"** a vision of ministry education that trains future church leaders while expanding services to current ministers and their congregations. If you believe in the importance of ministry education, you are invited to support **THE CCCB ANNUAL FUND FOR MINISTRY EDUCATION**.

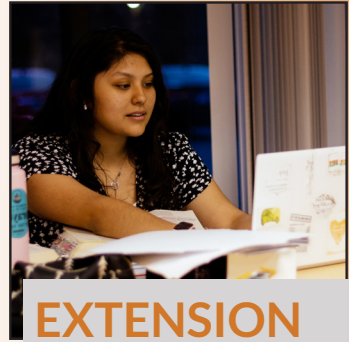
imagine **TOGETHER**

THE **CCCB** ANNUAL FUND FOR MINISTRY EDUCATION

"more than all we ask or imagine" (Ephesians 3:20)



RESIDENTIAL



EXTENSION



GRADUATE



CONTINUING

www.CCCB.edu

Residential Students spend significant time with others who share their values and experiences. They eat, sleep, and learn at the Moberly campus, which includes seven buildings on 26 acres.

imagineTOGETHER funds scholarships for undergraduate students and the operational costs of the campus. These surroundings provide a context for students to grow with others. Living in community reveals models of mentoring, discipling, and helping others. Residential students learn to **collaborate deeply within the Body of Christ**.

Extension Students utilize distance learning as the basic framework for their education. They participate in a local congregation to gain practical ministry experience. They may also interact with teachers and staff at an extension location. **imagineTOGETHER** helps cover the costs of student scholarships, technology resources, and operational expenses. Whether in a metropolitan area or rural context, students of all ages pursue their own educational goals. Extension degree recipients are able to **use their gifts biblically for personal leadership**.

Graduate Students study with other adults to begin or expand their professional ministry careers. A portion of their program uses online courses to teach practical applications of ministry leadership in a flexible format. Intensive learning experiences each semester network them high capacity teachers and workers from other congregations. **imagineTOGETHER** provides graduate student scholarships and administrates the Russell School of Ministry. Earning a graduate credential equips students to **work professionally in a ministry career**.

Continuing Education Students attend seminars and webinars, receive coaching, and access other resources to make them more effective leaders. Using a variety of learning methods, they are given practical advice to immediately improve their current ministry and church. Generous foundation gifts combine with **imagineTOGETHER** to make the **CCL Network** and the **Elliott Library & Museum** available in the Greater Cincinnati Area and the Midwest. Continuing education helps Christian workers **participate actively within a congregation**.

How You Can Support Ministry Education

Your **church** is invited to support Central with monthly gifts.

Supporting Church	Up to \$1,000/year
Partnering Church	\$1,000+/yr
Advancing Church	\$5,000+/yr
Founding Church	\$10,000+/yr

Churches also choose to send a **single annual donation** from a missions offering, surplus funds, or special project.

Your **personal gift** makes a difference at four partnership levels.

Ministry Friends	Up to \$1,000/year
Help a student pursue a faithful life of Kingdom ministry.	
Equippers	\$1,000+/yr
Equip leaders with the truth of God's word.	
Sustainers	\$5,000+/yr
Keep education affordable for students.	
Legacy Circle	\$10,000+/yr
Recognize the legacy of a faithful minister or missionary who was trained in Moberly, Cincinnati, or St. Louis.	

Method 1: Mail Your Check to One of Central's Offices

Send your check made payable to **CCCB** or the **CCL Foundation**:
911 East Urbandale Drive | Moberly, MO 65270
8095 Connector Drive | Florence, KY 41042

Method 2: Make Your Online Gifts at www.CCCB.edu/give

Save postage and time by creating an **automatic donation** to give conveniently and securely from a bank account or credit card.

Method 3: Maximize Your Stewardship with Planned Giving

Reduce your tax burden and **increase your impact** through gifts of stock, IRA transfers, charitable gift annuities, and more. To learn more select "Planned Giving" at CCCB.edu/give or email develop@cccb.edu.

MEMORIAL & HONORARY GIFTS

These people have been recognized from March 2023-December 2023
with a Memorial Gift to CCCB and the [CCL Foundation](#).

Gifts in Memory of...

Jeffrey Arnold	Fred Green	Brandon Pickett
Dr. Gary Bailey	Arthur Grove	Luke & Gladys Perrine
Philip Ballard	Erma Harris	Rodney & Lelah Randall
David Bean	Shirley Harshman	Frank & Margie Richardson
Elizabeth Beeson	Cindy Herbst	Jack & Karen Richardson
Leonard & Ruby Berry	Phil Holder	Bill & Dorothy Ritchey
Roy Bingaman	Oliver Holmeyer	Maurine Robinson
Dr. Russell Boatman	Marilyn Horn	Nate Schautz
Kenneth Boswell	M/M Kenneth Hoschouer	Bob & Carol Scholfield
Sheila Bottiger	Denis J. Howald	Eleanor Seals
Bruce Boyuk	Victor & June Hunter	David & Jewell Shelton
Joan Brown	Donald Jones	Don Sigler
Gene Burgus	Rose Joreen Jones	Dr. James "Jr" Smith
Kenny Burgus	Victor & Blanche Kakac	Jeff L. Smith
Chris Cable	Jack Knechtly	Goldie Spurling
Clarence & Etta Cain	Ron Lamp	Nell Stacy
Elbert & Betty Childers	J.Russell Lang	Maurice Steiner
Lawrence Clark	LeRoy & Lillian Lunsford	Deborah Stock
Gerald & Aldena Corbin	Myrna Lyda	Stephanie Sumption
Dr. Jack Cottrell	Alfred Mackey	Robert "Pete" Taylor
Jim Daniels	Kenneth Mantle	David Teufel
Kelly & Genevieve Dye	Bruce McClintock	Eugene Thorell
Chuck Embree	Lowell McCoy	Janet Thurston
Grayson Ensign	Helen McCully	Kenneth Tuggle
Charlotte Fussner	Bill & Claudia McGilvrey	Denny Varner
Paul & June Faust	Bob McKnight	Bill & Shirley Walton
Sharon Fincher	Anderson & Evelyn Meadows	Roy Weece
Dr. Lewis Foster	Glen Mitchell	Anna Lou Wheeler
John Fuller	Dr. Orval M Morgan	Charles Russell Wilson
Bob Gadberry	Bernice Nauman	Philip Young
Mary Ann Gadberry	Howard Newlin	
Dixie Garrison	Don Payne	

These people have been recognized from March 2023-December 2023
with an Honorary Gift to CCCB and the [CCL Foundation](#).

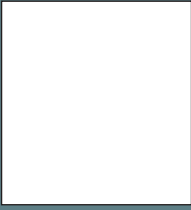
Gifts in Honor of...

Robert & Beverly Barrett	Curtis Farr	Rick Mosher
David & Melissa Beerbower	Loyal & Beverly Gallaher	Michael & Mary Nauman
Keith & Valerie Beerbower	David & Joyce Graves	Richard & Nancy Shonkwiler
Neil Bradley	William & Norma Hayden	David & Brenda Sowers
Thomas Cochran	Christine Johnson	Donald & Nancy Stivers
Kurtis & Callie Daniels	Victor & Evelyn Knowles	Margaret Thomas
Linda Edwards	Mary Manning-Blazey	Cynthia Willison
Joyce Embree	Bill & Kay McCoy	



**CENTRAL
CHRISTIAN**
COLLEGE OF THE BIBLE

911 East Urbandale Drive
Moberly, Missouri 65270
www.CCCB.edu
660-263-3900



UPCOMING EVENTS:



Thursday, March 28, 2024
"GOD'S OUTRAGEOUS
GRACE"
Dr. Mark Berrier

SOLID
Men's Conference



Thursday, April 11, 2024
"IT'S TIME TO GET SERIOUS
ABOUT GOD!"
Debbie Poer

Shine
Women's
Conference

For more information, email: KevinBrown@ccb.edu



www.CCCB.edu/events

Central Christian College of the Bible does not unlawfully discriminate on the basis of race, color, sex, age, disability, national or ethnic origin in employment, admissions, financial aid, and participation in college programs.